

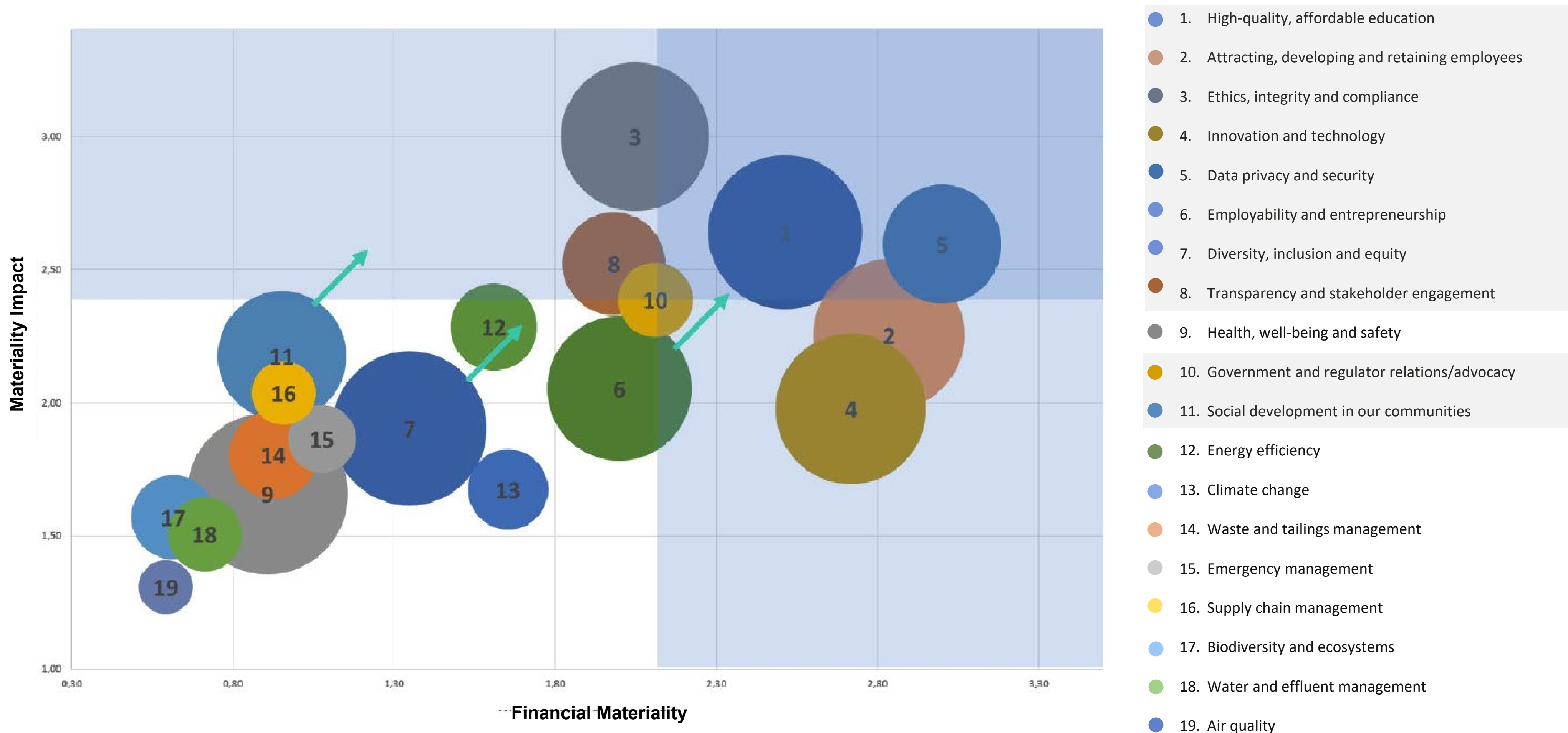
# YDUQS

## MATERIALITY MATRIX 2022

YDUQS

# Analysis | materiality matrix

Based on the concept of dual materiality, the two axes and their relevance were considered to identify the 10 material themes for Yduqs

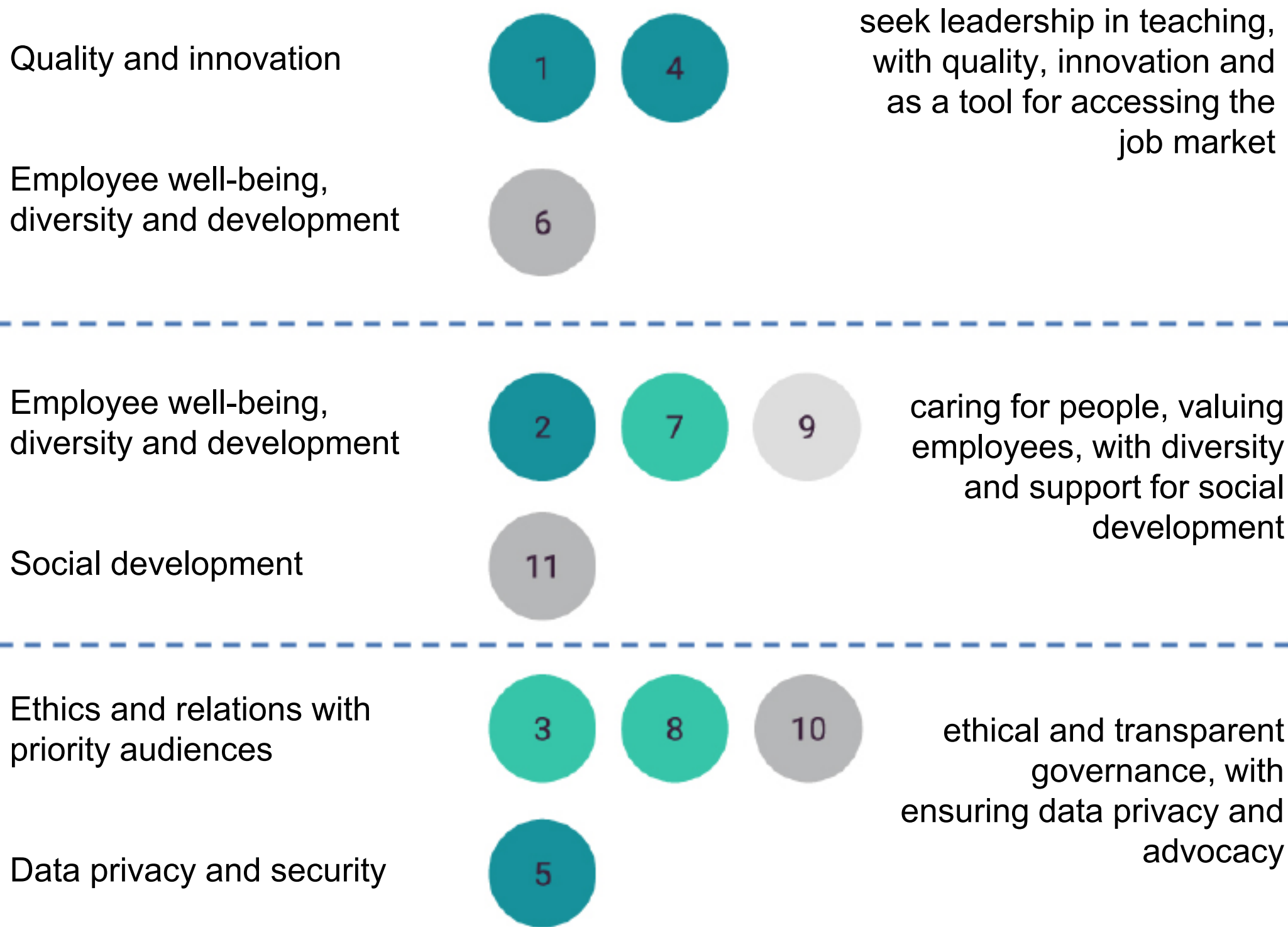


# Analysis | materiality matrix

What to treat as material: strategy and reporting



## approach to strategy - connection to ESG goals



- 1. High-quality, affordable education
- 2. Attracting, developing and retaining employees
- 3. Ethics, integrity and compliance
- 4. Innovation and technology
- 5. Data privacy and security
- 6. Employability and entrepreneurship
- 7. Diversity, inclusion and equity
- 8. Transparency and stakeholder engagement
- 9. Health, well-being and safety
- 10. Government and regulator relations/advocacy
- 11. Social development in our communities
- 12. Energy efficiency
- 13. Climate change
- 14. Waste and tailings management
- 15. Emergency management
- 16. Supply chain management
- 17. Biodiversity and ecosystems
- 18. Water and effluent management
- 19. Air quality

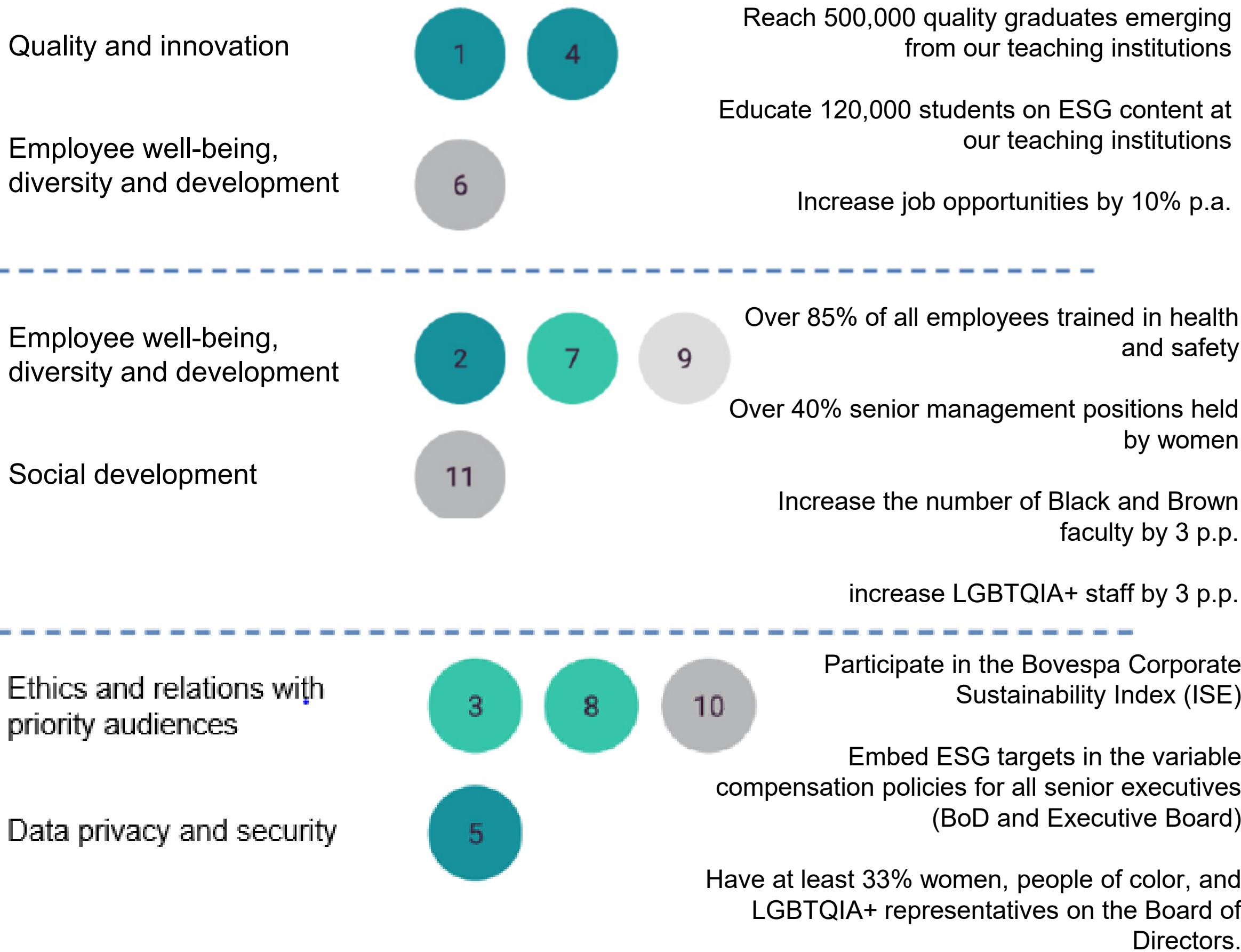
Theme 9 is not material, it was partially included - welfare issues -to theme 2



# Analysis | materiality matrix

What to treat as material: strategy and reporting

## approach to strategy - connection to ESG goals



- 1. High-quality, affordable education
- 2. Attracting, developing and retaining employees
- 3. Ethics, integrity and compliance
- 4. Innovation and technology
- 5. Data privacy and security
- 6. Employability and entrepreneurship
- 7. Diversity, inclusion and equity
- 8. Transparency and stakeholder engagement
- 9. Health, well-being and safety
- 10. Government and regulator relations/advocacy
- 11. Social development in our communities
- 12. Energy efficiency
- 13. Climate change
- 14. Waste and tailings management
- 15. Emergency management
- 16. Supply chain management
- 17. Biodiversity and ecosystems
- 18. Water and effluent management
- 19. Air quality

Theme 9 is not material, it was partially included - welfare issues -to theme 2

YDUQS